

Patch 9

Synching the Instruments *controlling tempos and clocks*

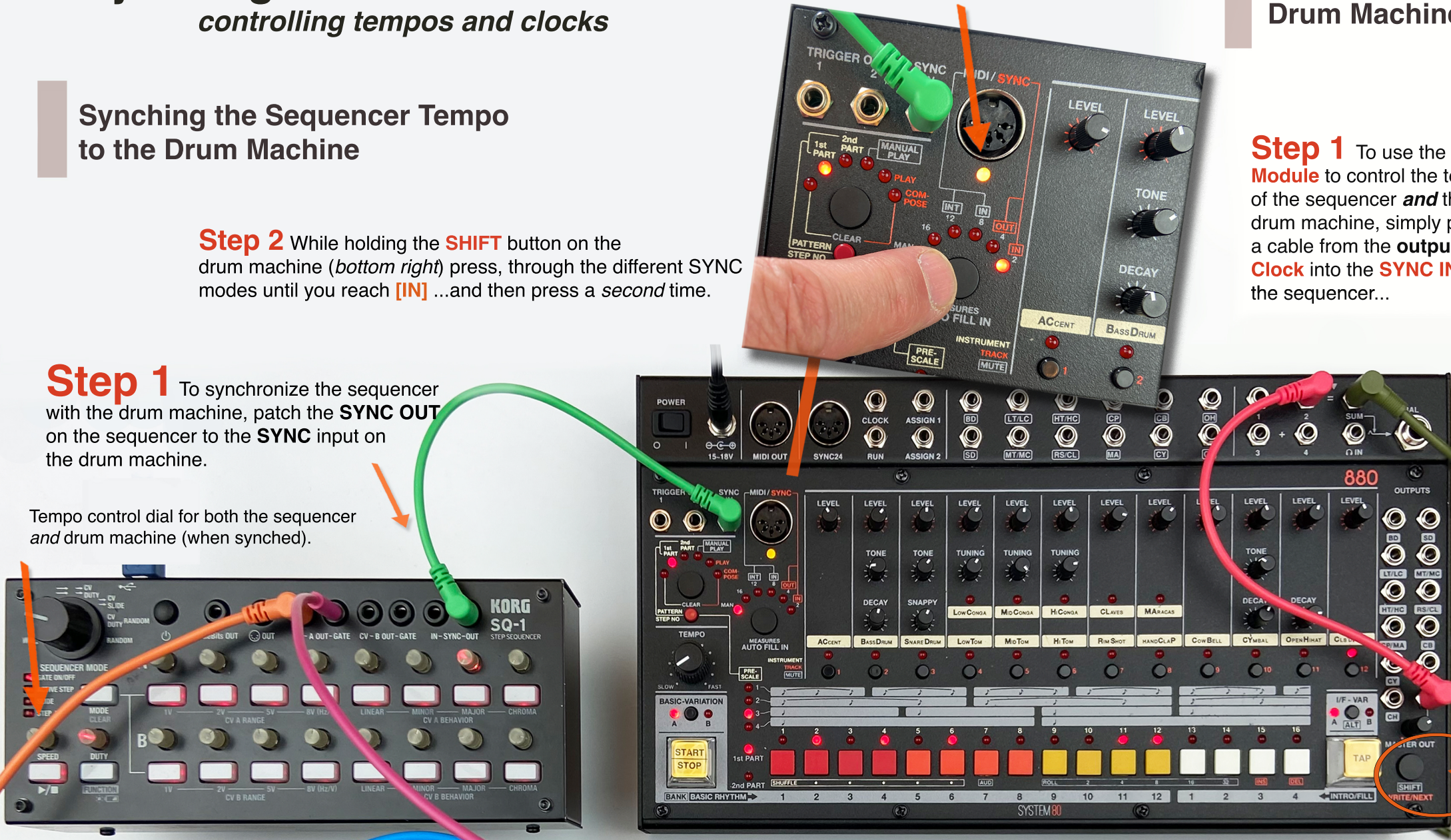
Synching the Sequencer Tempo to the Drum Machine

Step 2 While holding the **SHIFT** button on the drum machine (*bottom right*) press, through the different SYNC modes until you reach **[IN]** ...and then press a *second* time.

Step 1 To synchronize the sequencer with the drum machine, patch the **SYNC OUT** on the sequencer to the **SYNC** input on the drum machine.

Tempo control dial for both the sequencer and drum machine (when synched).

This light will be orange when synched.



Synching the Sequencer and Drum Machine to the Clock Divider

Step 1 To use the **Clock Module** to control the tempo of the sequencer *and* the drum machine, simply patch a cable from the **output** of the **Clock** into the **SYNC IN** of the sequencer...



Step 2 Use the **TAP** button to control the beat / tempo of all of your synchronized instruments.

Clock divider knobs allow you to control (multiply or divide) the tempo(s) of the four trigger/gate outputs.

**Clock
Module**

SHIFT Button